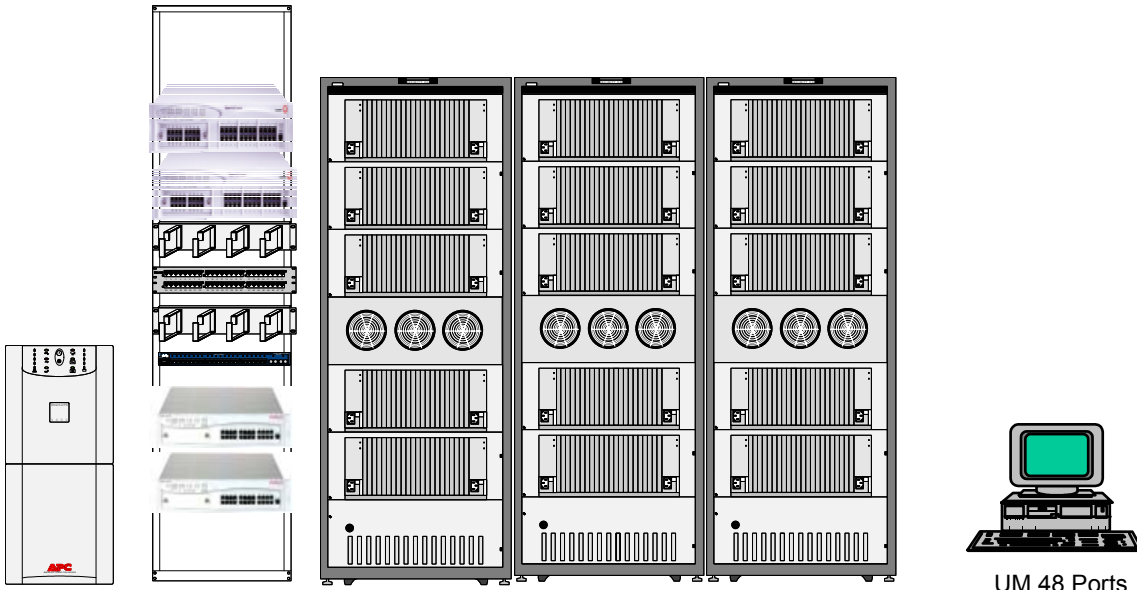


# Proposed Network Configuration


Thursday, 23 January 2003



UM 48 Ports

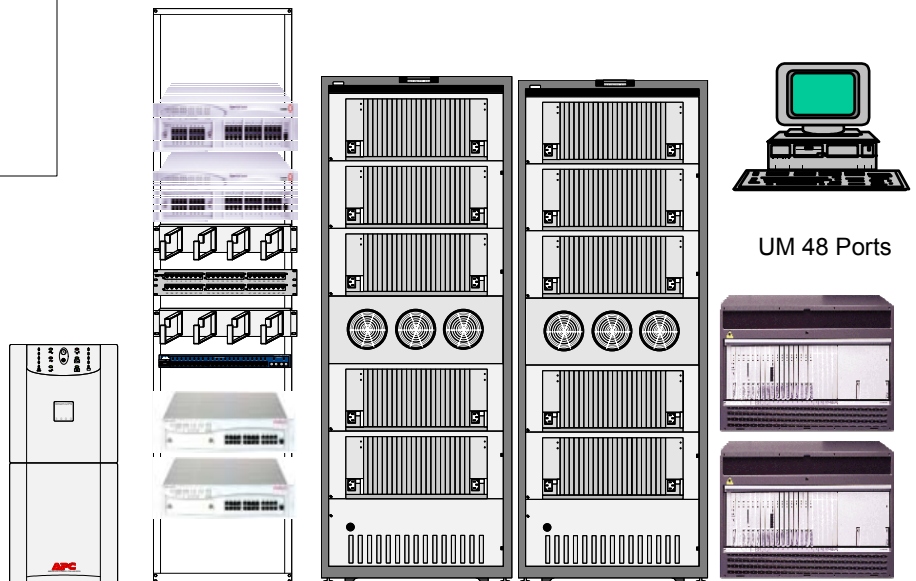
- Site One:
- Step 1, Install S8700
  - High Reliability System Configuration
  - Step 2, Translation migration via blowback
  - Approval to Proceed, Service Affecting
  - Step 3, Convert existing SPE A to EPN
  - Step 4, Remove SPE B & replace w/ new port carrier
  - Integrate S8700 to PN#1
  - Step 5, Add new PN#3, MCC EPN Port Network
  - Step 6, Integrate to S8700
  - Step 7, Install UPS
  - Step 8, System/Network testing

Install 1 UM server with 48 ports.

 Traditional DCS  
TBD Carrier  
TBD Members

- Site Two:
- Step 1, Install S8700
  - High Reliability System Configuration
  - Step 2, Translation migration via blowback
  - Approval to Proceed, Service Affecting
  - Step 3, Convert existing SPE A to EPN
  - Step 4, Remove SPE B & replace w/ new port carrier
  - Integrate S8700 to PN#1
  - Step 5, Integrate to S8700
  - Step 6, Install UPS
  - Step 6, System/Network testing

Install Um 48 ports with fail-over to Denver



UM 48 Ports

